



# 天主教輔仁大學

FU JEN CATHLIC UNIVERSITY



## 輔仁大學宗教學系

DEPARTMENT OF RELIGIOUS STUDIES

### 113 學年度學生手冊

2024-2025 Handbook

# 目 錄

關於宗教系 ABOUT THE DEPARTMENT OF RELIGIOUS STUDIES .....	3
輔仁大學宗教學系大事年表 MAJOR MILESTONES OF THE DEPARTMENT OF RELIGIOUS STUDIES AT FU JEN CATHOLIC UNIVERSITY....	3
本系宗旨 MISSION OF THE DEPARTMENT .....	3
學士班教育目標 EDUCATIONAL OBJECTIVES FOR THE BACHELOR' S PROGRAM .....	4
碩士班教育目標 EDUCATIONAL OBJECTIVES FOR THE MASTER' S PROGRAM .....	4
博士班教育目標 EDUCATIONAL OBJECTIVES FOR THE DOCTORAL PROGRAM .....	4
輔大宗教系-核心能力 CORE COMPETENCIES OF THE DEPARTMENT OF RELIGIOUS STUDIES AT FU JEN CATHOLIC UNIVERSITY .....	5
專業知識、技能指標 INDICATORS OF PROFESSIONAL KNOWLEDGE AND SKILLS.....	5
輔仁大學宗教學系修業規則 ACADEMIC REGULATIONS OF THE DEPARTMENT OF RELIGIOUS STUDIES AT FU JEN CATHOLIC UNIVERSITY .....	6
輔仁大學宗教學系學生選課輔導辦法【全系學生適用】 GUIDELINES FOR COURSE SELECTION COUNSELING FOR STUDENTS IN THE DEPARTMENT OF RELIGIOUS STUDIES [APPLICABLE TO ALL STUDENTS].....	7
宗教系 在職專班 MASTER'S PROGRAM FOR WORKING PROFESSIONALS IN RELIGIOUS STUDIES.9	
宗教學系碩士在職專班課程地圖 CURRICULUM MAP FOR THE MASTER' S PROGRAM FOR WORKING PROFESSIONALS IN RELIGIOUS STUDIES .....	10
碩士在職班課程結構表 CURRICULUM STRUCTURE FOR THE MASTER'S PROGRAM FOR WORKING PROFESSIONALS.....	11
輔仁大學宗教學系碩士在職專班畢業相關細則 GRADUATION REQUIREMENTS FOR THE MASTER' S PROGRAM FOR WORKING PROFESSIONALS AT FU JEN CATHOLIC UNIVERSITY.....	12
輔仁大學宗教碩士在職專班學位論文申請流程 APPLICATION PROCESS FOR THESIS SUBMISSION IN THE MASTER' S PROGRAM FOR WORKING PROFESSIONALS IN RELIGIOUS STUDIES .	14
輔仁大學宗教學系碩士在職專班選課計畫書 COURSE SELECTION PLAN FOR THE MASTER' S PROGRAM FOR WORKING PROFESSIONALS IN RELIGIOUS STUDIES .....	15
宗教碩士在職專班-學習時程備忘錄 STUDY SCHEDULE CHECKLIST FOR THE MASTER' S PROGRAM FOR WORKING PROFESSIONALS IN RELIGIOUS STUDIES .....	16

## 輔仁大學宗教學系大事年表

MAJOR MILESTONES OF THE DEPARTMENT OF RELIGIOUS STUDIES AT FU JEN CATHOLIC UNIVERSITY

民國 77 年	成立宗教研究所
民國 81 年	成立宗教學系學士班
民國 83 年	宗教系所改制為宗教學系學士班及碩士班
民國 91 年	成立宗教學系碩士在職專班
民國 92 年	成立宗教學系博士班
民國 99 年	成立宗教學系進修學士班

### 本系宗旨 Mission of the Department

本系秉持宗教教育求知與身教並重的傳統，兼顧宗教學理論、宗教傳統與宗教經驗，最終以宗教比較與交談為依歸，以之培養兼具宗教學術與實務能力之人才，充實生命教育與宗教輔導與實務人才。以此結合大學教育知人、知物、知天之精神，發展本系各具教學特色之學士班、進修學士班、碩士班、碩士在職專班、博士班等各學制。

The Department upholds the tradition of integrating intellectual inquiry and personal practice in religious education. It emphasizes the integration of religious theory, traditions, and experiences, ultimately focusing on comparative religion and interfaith dialogue. This approach aims to cultivate talents with both academic expertise and practical abilities in religious studies, enriching the fields of life education, religious counseling, and practice.

By aligning with the university's spirit of fostering understanding of humanity, nature, and the divine, the Department develops distinctive educational programs across various levels, including the Bachelor's Program, Continuing Education Bachelor's Program, Master's Program, Master's Program for Working Professionals, and Doctoral Program.

## 學士班教育目標 Bachelor's degree

學士班課程在宗教概論的基礎之上，逐年進入不同宗教傳統之文化、歷史、經典、思想，結合理論與方法的運用，落實宗教應用與實踐，以奠定宗教比較與宗教交談的基礎，培養具有交談態度的宗教學術與實務人才為目標。

Courses are centered on introduction to religion. Different religious traditions, cultures, history, scriptures and thoughts combined with theory and practice are introduced to help students to lay foundation for studies in comparative religion and interreligious dialogue.

## 碩士班教育目標 Master's degree

碩士班課程在學士班課程的基礎之上，持續深入不同宗教傳統，關注其間共通的人文、社會現象，以培養具有宗教比較與交談能力的宗教研究預備人才為目標。

## 碩士在職專班教育目標 Master's degree (Special program for On-the-Job students)

碩士在職專班課程在宗教學理論與宗教實務的共同基礎上，依照學生職涯規劃所需，選讀宗教傳統、比較宗教或者生死學、生命教育等不同學群，以儲備宗教理論與實務人才，及生死學與生命教育的輔導與實務人才為目標。

Courses include theory and practice of religion. Students according to their time can choose courses in religious traditions, comparative religion, thanatology, life education and become experts in religious theory and practice, thanatology as well as counselors and instructors of life education.

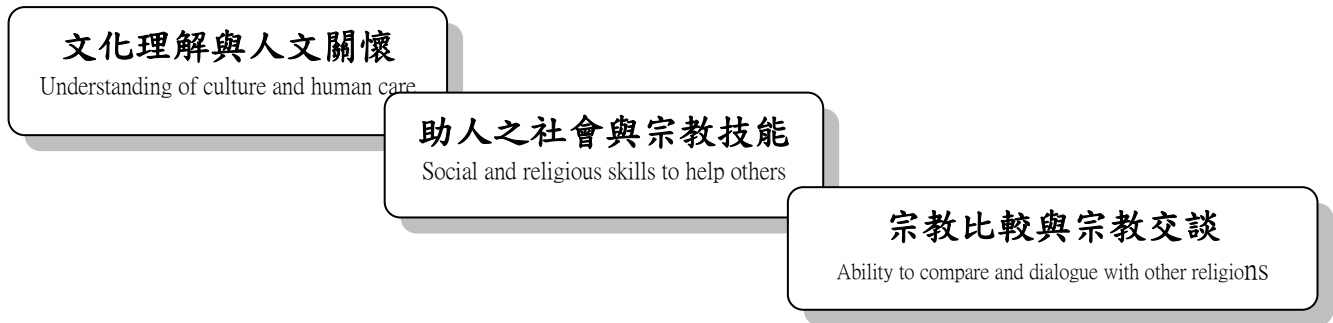
## 博士班教育目標 Doctoral degree (Ph. D)

博士班課程在宗教學與比較宗教學的理論基礎上，深入不同宗教傳統，以增進宗教比較與交談能力、培育跨領域的宗教研究人才為目標。

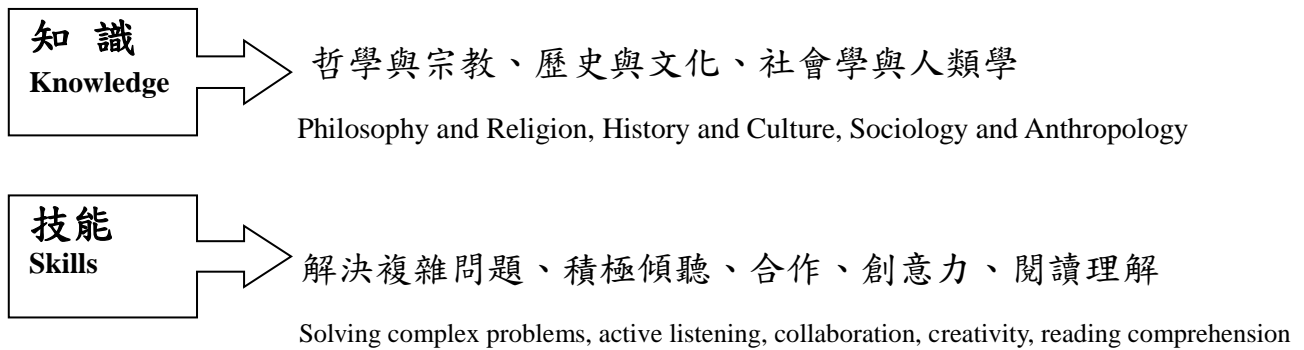
Religious studies and comparative religion form the foundation of PhD program. Delving deeper into various religious traditions, students are invited to enhance their ability to compare religious traditions and enter into dialogue with them.

## 輔大宗教系-核心能力

We aim at helping our students to develop the following core competencies:



## 專業知識、技能指標 Indicators of Professional Knowledge and Skills



# 輔仁大學宗教學系修業規則（113 入學生適用）

Regulations for the Department of Religious Studies (Applicable to students admitted in 113 academic year)

105.11.24 105 學年度第一次教務會議修訂通過

## 第一章 通則

第一條 本規則依據輔仁大學（以下簡稱本校）學則第四十條規定訂定之。

## 第四章 碩士在職專班 Master's Degree for Professional Working Students

第十條 本系碩士在職專班畢業應修之課程、學分數規定如下：

**Guidelines for master's degree program for professional working students are as follows:**

（一）修滿畢業論文 6 學分 **Thesis: 6 credits**

（二）修滿專業課程 8 學分 **Professional Mandatory course: 8 credits**

（三）修滿宗教選修課程 22 學分 **Optional courses on religion: 22 credits**

（四）選讀指導教授課程：校內指導至少選修一門課

Courses offered by the supervisor: two courses in FJU

（五）畢業學分數為畢業論文、專業研究、宗教選修課程三者之學分數，至少修畢 36 學分。

To be graduated students must complete 36 credits in all

第十一條 碩士在職專班學生經系上同意可選碩士班必、選修課程。

Professional working students can select mandatory and optional courses offered to regular master students

第十二條 學生入學前修讀本校推廣部碩士學分班課程，成績達 70 分及格者，入學後至多抵

免 10 學分；曾修讀宗教相關領域者得申請抵免至多 6 學分。

Students who have completed master's credit courses in FJU School of Professional and Continuing Education may waive a maximum of 10 credits provided that the scores of these courses are 70 or above. A maximum of 6 credits may be waived in the area of religious studies.

## 第六章 附則 Supplementary Provisions

第十五條 本規則未盡事宜，依輔仁大學學則及本系相關規定辦理。

Matters not covered by these regulations shall be handled in accordance with the regulations of Fu Jen Catholic University and the relevant rules of this department.

第十六條 本規則經系務會議、院務會議及教務會議通過，報請校長核定後公布施行。修正時

亦同。

These regulations shall be implemented after being approved by the Department Affairs Meeting, the College Affairs Meeting, and the Academic Affairs Meeting, and submitted to the President for approval. The same procedure applies when making amendments.

# 輔仁大學宗教學系學生選課輔導辦法【全系學生適用】

## Fu Jen University Department of Religious Studies Student Course Selection Guidance Regulations (Applicable to All Students)

1. 依據「輔仁大學學生選課辦法」第十八條規定，訂立「輔仁大學宗教學系學生選課輔導辦法」(以下簡稱本辦法)。

These regulations are established based on Article 18 of the "Fu Jen University Student Course Selection Regulations" and are referred to as the "Fu Jen University Department of Religious Studies Student Course Selection Guidance Regulations" (hereinafter referred to as these regulations).

2. 本辦法以協助學生自主學習、規劃個人學習地圖與選課輔導為核心理念，以學生為學習主體，透過本系資源及導師支持系統使其瞭解學習內容，並對自己的規劃與選擇負責。

The core philosophy of these regulations is to assist students in autonomous learning, planning their personal learning maps, and providing course selection guidance. Students are the main actors in their learning, and with the support of department resources and the advisor support system, they will understand the learning content and take responsibility for their plans and choices.

3. 系輔導選課支援系統 Departmental Course Selection Support System

- (1) 大學部學生應於「大學入門」課堂上充分了解本系之課程地圖，並由大學入門任課教師統籌規劃，邀請相關人員協助學生在入學第一學期完成「選課計畫書」，作為日後選課之依據。二年級起每年做例行檢視。

Undergraduate students should fully understand the department's course map during the "University Introduction" course. The course instructor will coordinate the planning and invite relevant personnel to assist students in completing the "Course Selection Plan" in their first semester, which will serve as the basis for future course selections. This will be reviewed annually starting from the second year.

- (2) 研究所博士班、碩士班及碩士在職專班學生應於「新生座談會」中瞭解課程及修業程序，在系行政人員、系主任及所導師的協助下完成「選課計畫書」。

Doctoral, master's, and professional master's students should understand the courses and academic procedures during the "New Student Orientation" and, with the help of department staff, the department chair, and advisors, complete their "Course Selection Plan."

- (3) 全系專任老師，尤其是導師須於平時約談中，關心學生的修課情形，適時給予指導。

All full-time faculty members, especially advisors, must regularly meet with students to discuss their course progress and provide timely guidance.

- (4) 本系輔導選課內容，包括 The department's course selection guidance includes: :

- A. 選課與「選課計畫書」之規劃及確定，選課宜配合生涯規劃、興趣、就業、升學與志向等。

Planning and confirming course selections with the "Course Selection Plan." Course selection should align with career planning, interests, employment, further studies, and aspirations.

- B. 重補修課程安排。

Arrangement of remedial or repeated courses.

C. 提醒學生及時完成各種畢業條件。

Reminders to students to complete graduation requirements on time.

D. 協助學生解決其它選課相關之問題。

Assistance with resolving other course selection-related issues.

#### 4. 學生個人自主系統 Student's Personal Autonomy System

(1) 學生須於入學的第一個學期完成「選課計畫書」。

Students must complete their "Course Selection Plan" in their first semester.

(2) 學生必須注意自己所規劃的課程，並於教學期間依照個人興趣、志向修訂「選課計畫書」，如有需要即時與導師、系辦公室商議。

Students should pay attention to their planned courses and revise their "Course Selection Plan" during the semester based on personal interests and aspirations. If necessary, they should discuss revisions with their advisor or the department office.

(3) 每學期選課作業時，系辦公室會直接代入本系所開必修及部分選修課程，學生應於系統開放後先行確認代入資料。

During each semester's course selection, the department office will pre-enter required courses and some elective courses into the system. Students should confirm this pre-entered data once the system is open.

(4) 各年級學生須熟悉本系印發的手冊中之「輔仁大學宗教學系修業規則」及相關實施細則。

Students in all grades should familiarize themselves with the "Fu Jen University Department of Religious Studies Regulations" and related implementation details in the department's handbook.

5. 本辦法經教務會議通過，報請校長核定後公布施行。修正時亦同。

These regulations are approved by the Academic Affairs Meeting and published after being submitted to the President for approval. The same procedure applies when making amendments.



# 宗教系 在職專班

**MASTER'S PROGRAM FOR WORKING PROFESSIONALS IN RELIGIOUS STUDIES**

# 宗教學系碩士在職專班課程地圖

## CURRICULUM MAP FOR THE MASTER'S PROGRAM FOR WORKING PROFESSIONALS



**碩士在職班課程結構表 Master's Program for Working Professionals Course Structure Table**

<p><b>宗教學組 (必選 4 學分)</b></p> <p><b>道教：</b>                  道教經典 Daoist Scriptures                  道教學導論 Introduction to Daoist Studies                  道教文獻專題 Seminar on Taoist Literature                  道教研究專題 Seminar on Daoist Studies                  臺灣道教儀式 Daoist Ritual in Taiwan                  道教女神信仰專題 Seminar on Taoist Deities</p> <p><b>佛教：</b>                  佛教與療癒 Buddhism and Healing                  淨土學導論(一/二) Introduction of the Theory of Pureland-Buddhism(I/II)                  淨土哲學與文化 Pure Land Philosophy and Culture                  淨土教理史 The Thought of Pure Land Buddhism                  淨土教美術專題 Pure Land Buddhism and Art                  當代佛教專題:電影與佛教 Buddhism in Modern Society: Buddhism and Film</p> <p><b>基督宗教：</b>                  基督宗教與臺灣原住民 Christianity and Taiwan aborigines                  台灣天主教史專題 Seminar : Taiwan Catholic History</p> <p><b>宗教專題：</b>                  宗教與生態 Religion and Ecology                  宗教與幽默 Religion and Humor                  宗教哲學專題                  Research on Philosophy of Religion                  宗教心理學專題                  The Research on Psychology of Religion                  宗教與環保專題                  宗教人類學專題                  Athropology of Religion                  宗教心理學專題                  宗教播客製作專題                  Podcast Application of Religious Studies                  台灣民間宗教專題                  Taiwanese Folk-Religions                  宗教田野調查方法                  Methods in Field Study of Religion                  台灣宗教變遷專題                  Transition in Taiwan Religious                  宗教自媒體製作專題                  WE MEDIA Application of Religious Studies                  宗教與文化旅遊專題                  Studies in Religious and Cultural Tourism</p>		<p><b>生死學與生命教育組 (必選 4 學分)</b></p> <p>臨終關懷 Hospice                  哀傷輔導 Sorrow Counseling                  民俗生死學 Study on Life &amp; Death of Folk                  宗教生死學 Religious Life-and-Death                  宗教生命教育 Education of Religious Life                  道教生死學專題 Daoist Life-and-Death Studies                  佛教生死學專題 Research on Buddhist Life and Death                  道教生命教育專題 Life Education in Daoism                  電影中的終極關懷 Ultimate Concern in Cinema                  電影中的生命教育 Life Education in Films                  宗教與生命倫理專題 Research on Religion and Bioethics                  恐怖類型電影與生命關懷 horror film and Humanistic care                  其它</p>														
<p align="center"><b>基礎課程 (必選 4 學分)</b></p> <p>論文寫作 Thesis Writing / 報告與論文寫作 Report and Thesis Writing                  宗教學研究 Religious Studies / 宗教學研究取徑 Approaches to the Study of Religion</p>																
<p align="center"><b>靈修與養生</b></p> <p>道教氣學專題 Daoist QiXue                  道教太極學專題 The Taoist Tai Ji                  道教丹道學專題 Daoist Alchemv                  古琴與東方靈修 Chinese Zither and Eastern Religious Spirituality                  古琴與宗教靈修 Guqin and Religious Spirituality                  道教養生學專題 Daoist Life Cultivation                  靈性與藝術治療 Spirituality and Arts Theranv                  生態、心靈與療癒 Ecopsychology and Healing                  其它</p>																
<p><b>畢業學分 Graduation credits</b></p> <table border="1"> <thead> <tr> <th>課程屬性 Course attributes</th> <th>學分數 Credits</th> <th>備註 Notes</th> </tr> </thead> <tbody> <tr> <td>校訂必修 School-mandated required</td> <td>6</td> <td>論文必修學分 Required thesis credits</td> </tr> <tr> <td>系專業必選 Department-specific elective</td> <td>8</td> <td>系訂定之必選學分 Department-specific required elective credits</td> </tr> <tr> <td>其他選修 Other electives</td> <td>22</td> <td>學生可自由選修與論文相關之興趣學分 Credits for electives related to the thesis, chosen based on the student's interests</td> </tr> <tr> <td>總計 Total</td> <td>36</td> <td></td> </tr> </tbody> </table>		課程屬性 Course attributes	學分數 Credits	備註 Notes	校訂必修 School-mandated required	6	論文必修學分 Required thesis credits	系專業必選 Department-specific elective	8	系訂定之必選學分 Department-specific required elective credits	其他選修 Other electives	22	學生可自由選修與論文相關之興趣學分 Credits for electives related to the thesis, chosen based on the student's interests	總計 Total	36	
課程屬性 Course attributes	學分數 Credits	備註 Notes														
校訂必修 School-mandated required	6	論文必修學分 Required thesis credits														
系專業必選 Department-specific elective	8	系訂定之必選學分 Department-specific required elective credits														
其他選修 Other electives	22	學生可自由選修與論文相關之興趣學分 Credits for electives related to the thesis, chosen based on the student's interests														
總計 Total	36															

# 輔仁大學宗教學系碩士在職專班畢業相關細則

101.4.17.一〇〇學年第二次系務會議討論通過  
預計 104.9.29 104 學年第一學期系務會議討論通過  
106 學年度第二學期系發會議通過

## 一、 修課須知：

1. 在學的一、二年級期間，每學期修課至少 2 學分，至多 12 學分（論文一門除外）。

## 二、 學位考作業須知：

1. 申請學位考（含申請指導教授）時間：每年於 10、12、3、5 月第一週接受學生申請。
2. 申請指導教授：指導教授資格須具助理教授以上，並修讀指導教授至少一門課程；若為校外教授指導，則須填寫校外指導申請單後，提請本系碩博士學位論文審核委員會審核。學生須於入學第三學期確定指導教授人選。
3. 學位考審查委員會：每年於 10、12、3、5 月第二週審查所有相關學位考申請案。
4. 專任教師指導學生數：每學年接受該年度 6 位（含碩士班、碩士在職專班，不含博士生）研究生為原則。
5. 進行資格考之前，學生必須旁聽觀摩本系學位考（含資格考）口試至少 3 次。
6. 申請資格考：論文完成二分之一，經指導教授同意後，準備「資格考申請單」、「輔仁大學宗教學系碩士生選課計畫書」、「學位論文指導教授指導表」及紙本論文 2 本在規定時間內提出申請。
7. 申請學位考：資格考通過後三個月始得進行學位考試。準備「學位考申請單」及紙本論文 3 本，在規定時間內提出申請。
8. 學生繳交紙本論文後始得聯繫與確認委員資格考或學位考之口試時間。（資格考與學位考流程，請參照碩士在職專班學位論文作業流程）
  - (1). 資格考申請通過，學生繳交紙本論文後，3 週後始得口試。
  - (2). 學位考申請通過，學生繳交紙本論文後，4 週後始得口試。
  - (3). 學生務必將考試論文送至系所辦公室，才使得安排口試事宜。

## 三、 畢業離校程序：學生須於 1.國家圖書館 2.本校圖書館建檔完成後始得辦理離校手續。

## 四、 本細則若有未盡事宜，悉依「輔仁大學學則」及「輔仁大學宗教學系修業規則」相關規定辦理。

## 五、 本細則經本系學位考委員會、系務發展會議及系務會議通過後實施。修正時亦同。

**【相關表格請至系網站下載】**

## I. Course Requirements:

### 1. **Course Enrollment:**

During the first and second years of the program, students must take at least 2 credits and no more than 12 credits per semester (excluding the thesis course).

## II. Degree Examination Procedures:

### 1. **Application Period for Degree Examination (Including Thesis Advisor Selection):**

Applications are accepted in the first week of October, December, March, and May each year.

### 2. **Thesis Advisor Application:**

The thesis advisor must hold at least the rank of Assistant Professor and have taught at least one course related to the student's research. If the advisor is an external professor, the student must submit an application for external advising, which will be reviewed by the Department's Master's and Ph.D. Thesis Review Committee. Students must confirm their thesis advisor by the third semester of enrollment.

### 3. **Degree Examination Review Committee:**

Applications for the degree examination are reviewed in the second week of October, December, March, and May each year.

### 4. **Number of Students Advised by Full-time Faculty:**

Faculty can advise up to 6 students per academic year (including students from the Master's program, Master's for Working Professionals, but excluding doctoral students).

### 5. **Qualification Examination Requirements:**

Before taking the qualification exam, students must attend at least 3 oral exams for the department's degree (including qualification exams) as observers.

### 6. **Qualification Examination Application:**

After completing at least half of the thesis, students may apply for the qualification exam with the following documents:

- Qualification Examination Application Form
- Fu Jen University Department of Religious Studies Master's Course Plan
- Thesis Advisor's Guidance Form
- Two printed copies of the thesis.

### 7. **Degree Examination Application:**

Students may apply for the degree examination three months after passing the qualification exam. Required documents include:

- Degree Examination Application Form
- Three printed copies of the thesis.

### 8. **Scheduling Oral Exams:**

After submitting the printed thesis, students can arrange the oral exam date with the committee members.

- Qualification Exam: Oral exams can be scheduled 3 weeks after submission.
- Degree Exam: Oral exams can be scheduled 4 weeks after submission.
- Students must ensure that the thesis is delivered to the department office to arrange the oral exam.

## III. Graduation Procedures:

Students must complete the archival process at both the **National Central Library** and the **University Library** before they can proceed with the graduation procedures.

## IV. Miscellaneous:

Any matters not addressed in this document shall be handled according to the **Fu Jen University Academic Regulations** and the **Fu Jen University Department of Religious Studies Program Rules**.

## V. Implementation:

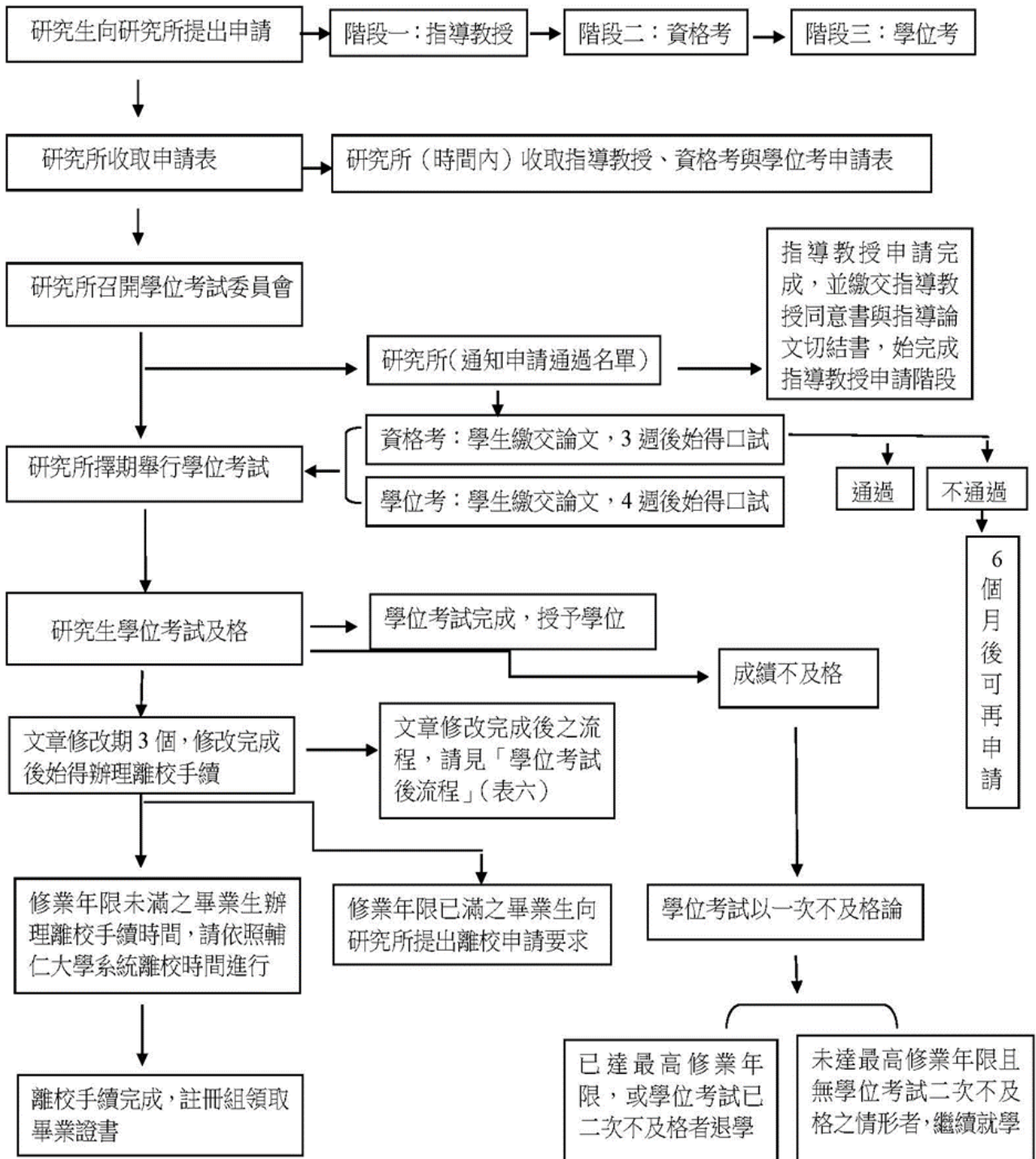
These regulations are implemented after approval by the Department's Degree Examination Committee, Department Development Meeting, and Department Meeting. Any amendments will follow the same process.

[Relevant Forms are available for download on the department's website.]

# 輔仁大學宗教碩士在職專班學位論文申請流程

Fu Jen Catholic University Master's in Religious Studies (Working Professionals) Degree Thesis Application Process

宗教學系碩士在職專班學位論文申請流程圖



# 輔仁大學宗教學系碩士在職專班選課計畫書

Fu Jen Catholic University Department of Religious Studies Master's for Working Professionals Course Plan

學號		入學日期	年	月	組別 <input type="checkbox"/> 宗教學組 <input type="checkbox"/> 生死學與生命教育組					
姓名		填表日期	年	月						日
手機		聯絡電話								
E-mail										
學習目標										
課程選修計畫										
年級	學期	兩組基礎課群		宗教學組課群		生死學與生命教育課群		特色選修課程		當期學分總計
		課程名稱	學分數	課程名稱	學分數	課程名稱	學分數	課程名稱	學分數	
一	上									
	下									
二	上									
	下									
總學分										
填表人簽名		輔導教師(含助教)簽名		系主任簽章						



# 宗教碩士在職專班-學習時程備忘錄

Fu Jen Catholic University Department of Religious Studies Master's for Working Professionals - Study Schedule Memorandum

年級	活動時間	項目	承辦單位	詢問單位	備註
一年級 上學期	開學前	迎新茶會		碩士二年級生	
	開學前一週至 開學第一週	選課			系所相關課程可至學校網站查詢
	開學第一週	學分抵免	碩職秘書		新生入學第一週辦理
	開學第一週	選課計畫書繳交	碩職秘書		可先與導師洽談選課問題
	學期末（五月）	宗教雅集		古琴社、太極社	
一年級 下學期	開學前一週至 開學第一週	選課			系所相關課程請至學校網站查詢
	學期間	指導教授 相關問題	碩職秘書		請導師建議指導教授 ／自行與教授面談
	學期間	宗教雅敘	所秘書		
	學期末以前	申請指導教授	碩職秘書		請於每學年 3.5.10.12 月的第一週提出申請
	學期末（十二月）	宗教雅集		古琴社、太極社	
二年級 上學期	開學前一週至 開學第一週	選課			系所相關課程可至學校網站查詢
	學期末以前	確認指導教授	碩職秘書		填寫指導教授同意書 與寫作切結書
	學期末（十二月）	宗教雅集		古琴社、太極社	
二年級 下學期	開學前一週至 開學第一週	選課			系所相關課程可至學校網站查詢
	學期間	與指導教授討論資格考 相關事宜			請於每學年 3.5.10.12 月的第一週提出申請
	學期間	宗教雅敘	所秘書		
	學期末以前	與指導教授擬定學位考 相關事宜			請於每學年 3.5.10.12 月的第一週提出申請
	學期末（五月）	宗教雅集		古琴社、太極社	



# 天主教輔仁大學

FU JEN CATHOLIC UNIVERSITY

## 宗 教 學 系

DEPARTMENT OF RELIGIOUS STUDIES

學士班	02-29052603	傳真：02-29052179
碩士班	02-29052791	傳真：02-29052180
碩士在職專班	02-29052013	傳真：02-29052179
博士班	02-29052603	傳真：02-29052179

地址：台新北市新莊區中正路 510 號  
[www.rsd.fju.edu.tw](http://www.rsd.fju.edu.tw)